

# SCAFFOLD ERECTION NOTES

**EDGE PROTECTION**  
ENSURE THAT DOUBLE GUARDRAILS AND TOE BOARDS ARE FIXED TO ALL WORKING PLATFORMS AND SINGLE GUARDRAIL ON ALL INTERMEDIATE PLATFORMS. SCAFFOLD ERECTION IN ACCORDANCE WITH THE LATEST CURRENT SG 4 STANDARDS  
MAXIMUM LIFT HEIGHT 2300mm.

**TRANSOMS**  
TRANSOMS CENTRES OF 1000mm MUST NOT BE EXCEEDED WITH ADDITIONAL TRANSOMS AT BOARD JOINTS.  
MAXIMUM TRANSOM SPAN 1000mm.  
BOARDS SHORTER THAN 1200mm TO HAVE A MINIMUM OF 3 TRANSOM.

**STRUCTURAL TRANSOMS**  
STRUCTURAL TRANSOMS TO BE FIXED AS SHOWN USING LOAD BEARING COUPLERS.

**LEDGERS**  
MAXIMUM LEDGER SPAN 2000mm.

**PUNCHEONS**  
PUNCHEONS INDICATED THUS. FIX TO BOTH CHORDS OF BEAMS USING LOAD BEARING COUPLERS.

**CLASS 'B' COUPLERS**  
ONLY CLASS 'B' COUPLERS TO BE USED.

**BOARDS**  
USE 38mm SCAFFOLD BOARDS. SHORT BOARDS (LESS THAN 2400mm) TO BE FIXED DOWN USING BOARD CLAMPS. BOARD OVERHANG TO BE BETWEEN 50mm AND 150mm MAX.

**BRACING**  
BRACES FIXED TO BAYS INDICATED USING LOAD BEARING COUPLERS.

**FOOTINGS**  
CLIENT TO PREPARE SOUND AND LEVEL FOOTINGS. ALL STANDARDS ARE TO BE FOOTED ON H.S. BASE PLATES ON 225mm X 450mm X 38mm THICK TIMBER SOLE PADS.

**USE 450 ALLOY BEAMS**  
TOP CHORD RESTRAINT @ 1.0M C/C MAX.  
BOTTOM CHORD RESTRAINT @ 2.0M C/C MAX.  
LATERAL BRACING AT @ 2.0M C/C MAX.

PLAN BRACE FULL LENGTH UNDER TOP CHORD. FIX ALL STANDARDS, DROP TUBES OR PUNCHEONS TO BOTH CHORDS USING LOAD BEARING COUPLERS. FIX SUPPLEMENTARY COUPLERS AS INDICATED. AT SUPPORTS FIX LACING TUBES TO STANDARDS BELOW THE BEAM CHORDS. AT PUNCHEONS AND DROP TUBES FIX LACING TO TUBES ABOVE THE BEAM CHORDS.

**SCREW JACKS**  
USE ADJUSTABLE SCREW JACKS AT ALL STANDARDS, MAXIMUM EXTENSION 300mm. TO BE BASED ON SOUND AND LEVEL FOOTINGS. USE 450mm X 225mm SOLE PADS UNDER.

**TIES**  
TIES TO BE FIXED IN POSITIONS INDICATED THUS. SEE TIE DETAIL FOR ARRANGEMENT / TYPE.

**LADDERS**  
FIX LADDER ACCESSES INSIDE SCAFFOLD WITH SELF CLOSING GATE TO ALLOW ACCESS TO WORKING PLATFORM. LADDER TO BE A MINIMUM OF 1000mm ABOVE PLATFORM, WITH A RAKE OF 1:4.  
LADDER POSITIONS TO BE AGREED ON SITE.

**DEBRIS NETTING**  
SECURE DEBRIS NETTING TO INSIDE OF THE EXTERNAL PERIMETER OF SCAFFOLD USING CABLE TIES.



THIS DRAWING IS CONFIDENTIAL AND IS THE EXCLUSIVE PROPERTY OF EMBASSY SITE SERVICES. NO UNAUTHORISED USE, COPY OR DISCLOSURE IS TO BE MADE, AND IS TO BE RETURNED UPON REQUEST. ALL SERVICES OFFERED BY EMBASSY SITE SERVICES ARE FOR CONSTRUCTION BY BIDDING THE SCAFFOLD STRUCTURES THAT EMBASSY CONTRACTORS ARE COVERED BY PROFESSIONAL INDEMNITY INSURANCE. EMBASSY WILL NOT ACCEPT RESPONSIBILITY FOR ANY LOSSES, DAMAGES OR INJURY SUFFERED FROM THE USE OF ANY SERVICES FOR CONSTRUCTION BY ANY PARTY OTHER THAN EMBASSY SITE SERVICES. ALL DIMENSIONS ARE AS STATED OR AS CALCULATED. WRITTEN DIMENSIONS SHALL TAKE PRECEDENCE OVER SCAFFOLD DIMENSIONS. DIMENSIONS IN MM UNLESS STATED OTHERWISE. (ISO). CONSTRUCTION IN ACCORDANCE WITH BS EN 12811-1 AND MANUFACTURERS GUIDELINES. ALL TUBES TO BE STEEL IN ACCORDANCE WITH BS EN 20, UNLESS NOTED OTHERWISE. (EN20). ALL COUPLERS TO COMPLY WITH BS EN 12128. ALL BOARDS TO COMPLY WITH BS EN 12811-1 UNLESS NOTED OTHERWISE. (EN20). SCAFFOLD ERECTION AND DEMANTING TO COMPLY WITH THE CURRENT EDITION OF SG 4. THE CONSTRUCTION DESIGN AND MANAGEMENT REGULATIONS 2015 IN ORDER TO ELIMINATE, REDUCE AND CONTROL RISK. SAFETY, HEALTH AND THE DESIGN RISK ASSESSMENT HAVE BEEN CONSIDERED IN THE PREPARATION, PRODUCTION OF THIS DESIGN THROUGH CO-OPERATION AND CO-ORDINATION WITH OTHERS. SOME RESIDUAL HAZARDS / RISKS MAY REMAIN. THESE ARE IDENTIFIED WITH A HAZARD SYMBOL AND REFERENCE. EMBASSY OPERATOR MANAGERS AND / OR THE CLIENTS SHOULD ASSESS AND MANAGE THESE RESIDUAL HAZARDS / RISKS. (IF APPLICABLE REFER TO THE DESIGN RISK ASSESSMENT).

**MAXIMUM ALLOWABLE LIVE LOADS**  
2.00kN/m<sup>2</sup> ON 1 No. WORKING PLATFORM (S)  
1.00kN/m<sup>2</sup> ON 1 No. ADDITIONAL PLATFORM (S)  
0.75kN/m<sup>2</sup> ON 1 No. INSIDE BOARD (S)

**ENVIRONMENTAL LOADS**  
0.28kN/m<sup>2</sup> PEAK WIND VELOCITY PRESSURE  
JUNE PERIOD OF ERECTION  
16 WEEKS MAXIMUM DURATION OF SCAFFOLD

**INTERFACE LOADS**  
TBCKN MAXIMUM VERTICAL POINT LOAD  
2.42kN CALCULATED HORIZONTAL TIE LOAD

**TIE LOAD TESTING**  
3.10 kN PROOF TEST (F.O.S. 1.25 : 1)  
PROOF TEST 3 No. OR 5% OF TIES (WHICHEVER IS GREATER)

4.83 kN PRELIMINARY TEST LOAD (F.O.S. 2 : 1)  
5 No. ANCHORS IN ALTERNATIVE LOCATION - NOT TO BE USED.

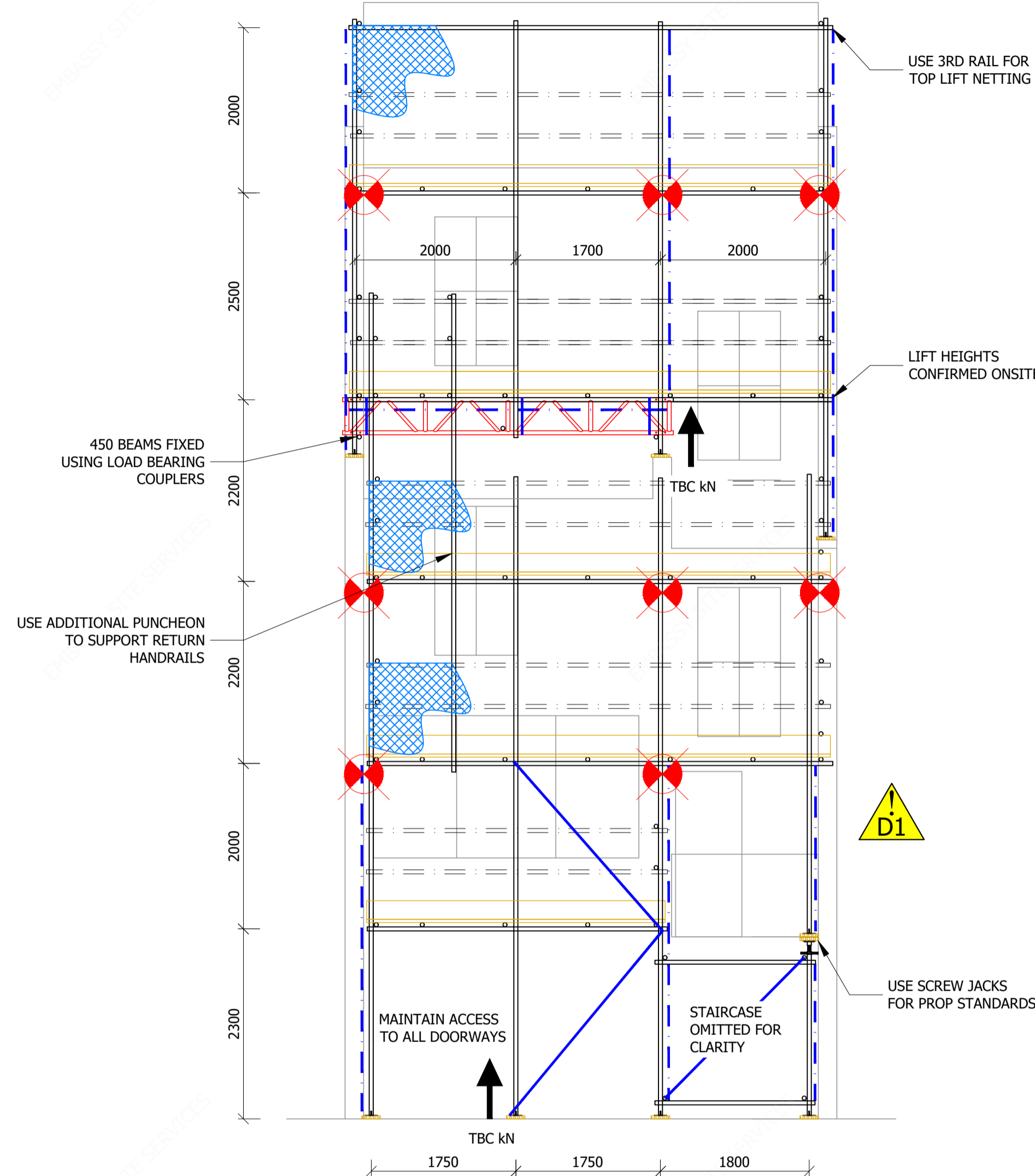
**ASSOCIATED DOCUMENTATION**  
TBC-ESS-0043-CAL CALCULATION  
TBC-ESS-0043-DRA DESIGNERS RISK ASSESSMENT

**RESIDUAL RISKS**

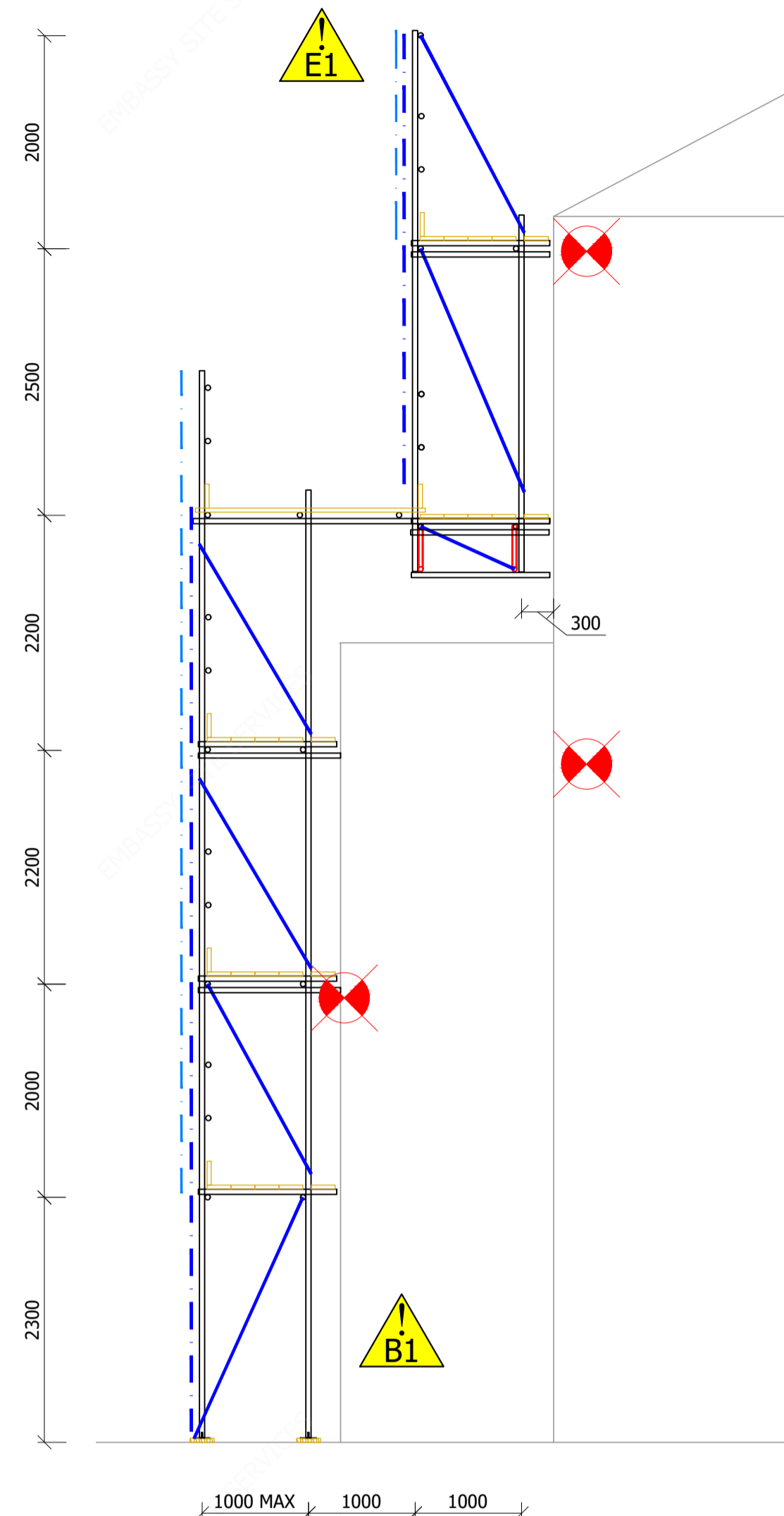
THE FOLLOWING RESIDUAL RISKS HAVE BEEN IDENTIFIED IN THE DESIGN PROCESS AND ARE HIGHLIGHTED ON THIS DRAWING USING THE FOLLOWING SYMBOLS

- DESIGNED USE OF SCAFFOLD
- IMPOSED LOADS TO GROUND
- IMPOSED LOADS TO EXISTING STRUCTURE
- POSITION OF SCAFFOLD
- UNAUTHORISED ADAPTION OF SCAFFOLD
- WORKING AT HEIGHT

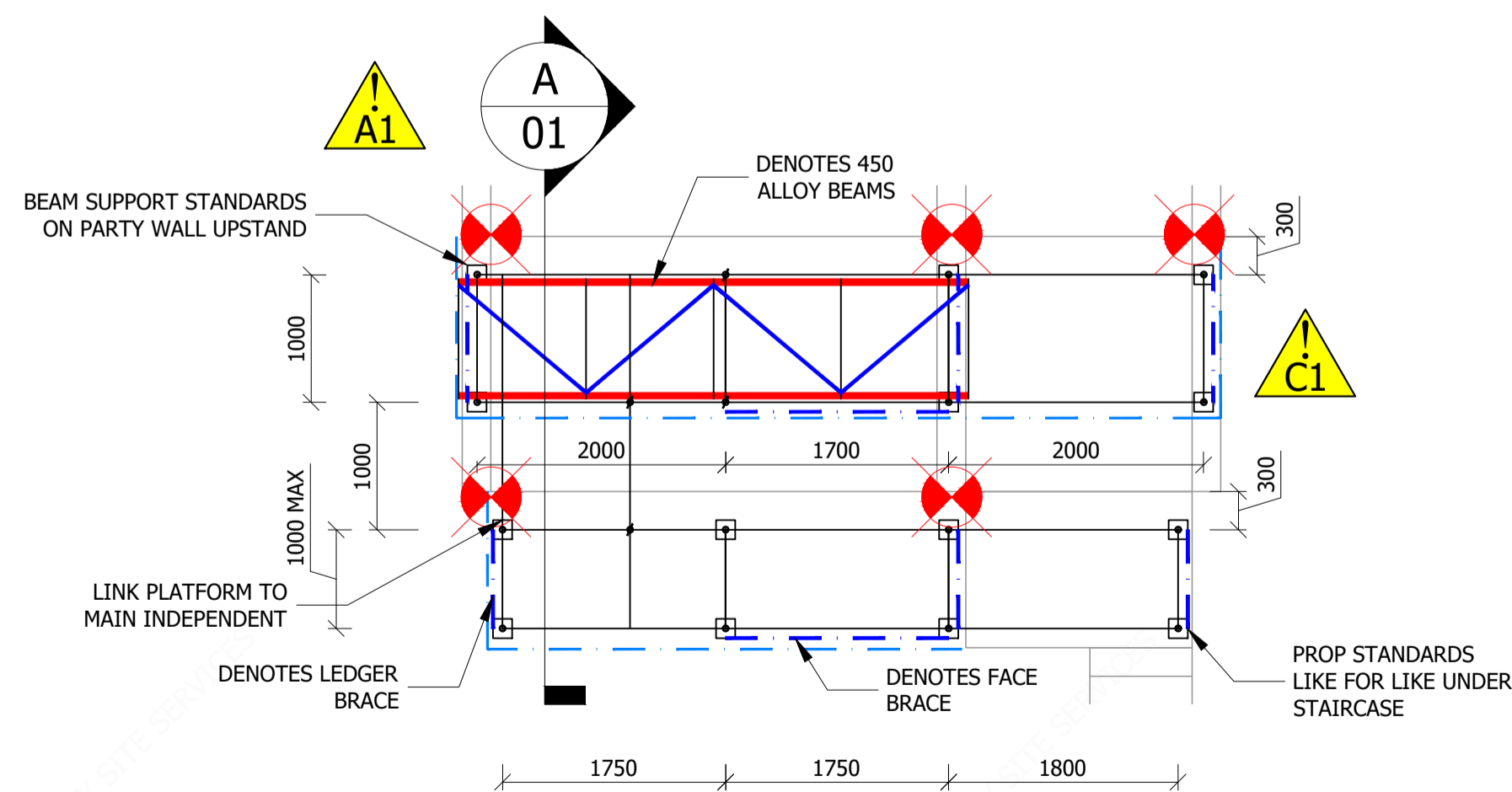
FOR FURTHER INFORMATION PLEASE REFER DESIGNERS RISK ASSESSMENT DOCUMENT: TBC-ESS-0043-CAL



FRONT ELEVATION

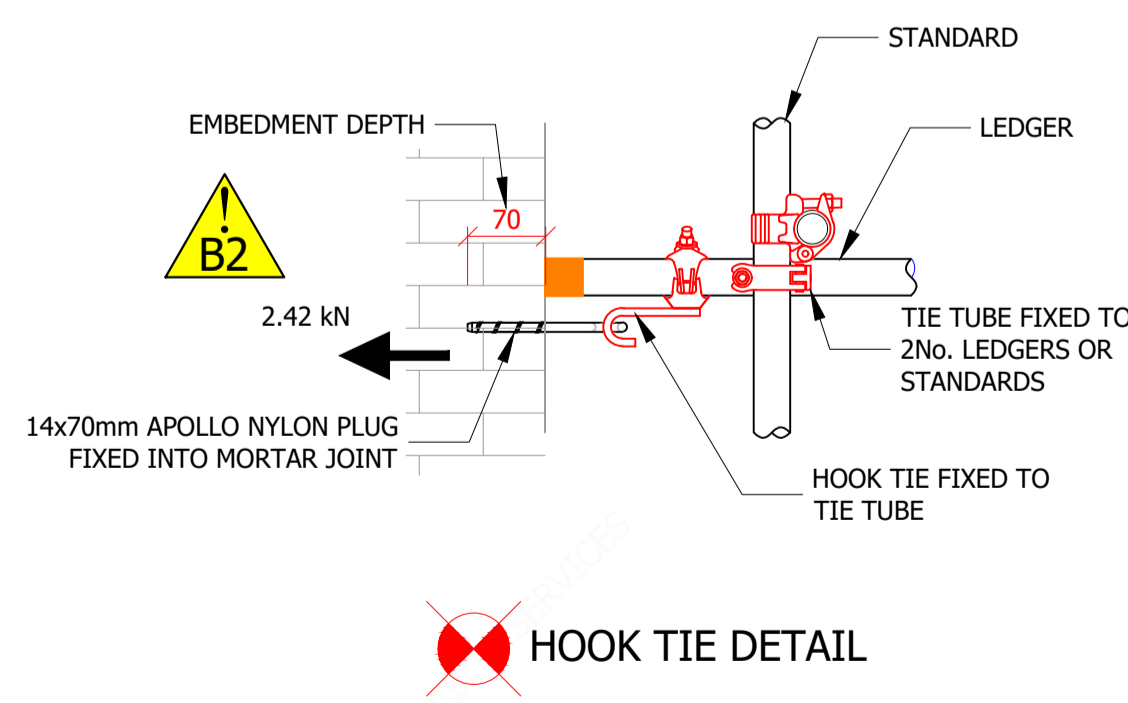


SECTION A-A

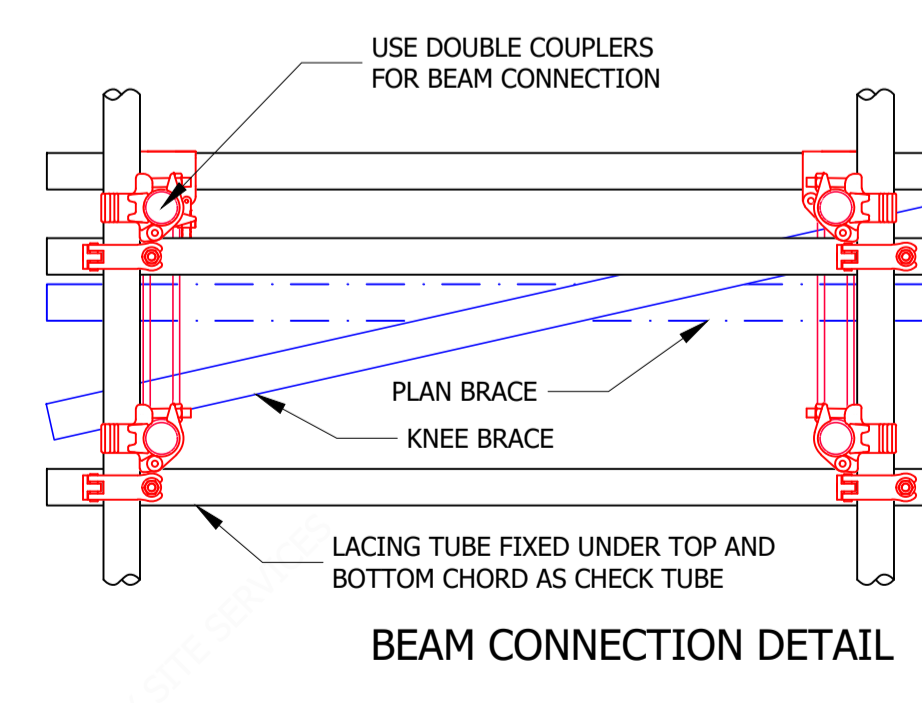


PLAN VIEW

BOARDS AND BOARD BEARING TRANSOMS OMITTED FOR CLARITY



HOOK TIE DETAIL



BEAM CONNECTION DETAIL

DRAWING STATUS  
● PRELIMINARY ISSUE

REV	DESCRIPTION	BY	DATE
P01	ISSUED FOR INTERNAL SIGN OFF	MW	10.05.24

CLIENT  
**WATES**

TITLE  
**ACCESS SCAFFOLD**

SITE  
**27 MELVERN ROAD**

SCALE  
1:50 @ A1

DRAWN BY  
M.WARD

10.05.24

PRELIMINARY APPROVAL BY  
LENNIE TBC

CHECKED BY

00.00.00

CONTRACT DIVISION DESIGN REF DOCUMENT SHEET STATUS  
TBC - ESS - 0147 - DRG - 01 - P REV 01